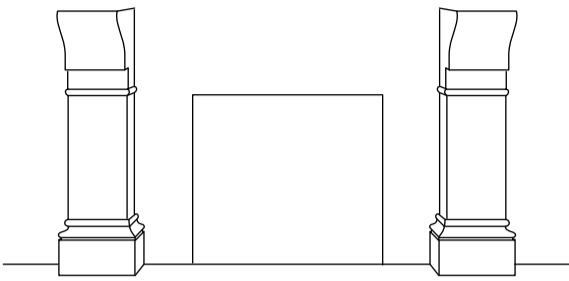


MULTI-CAST DESIGN INC.

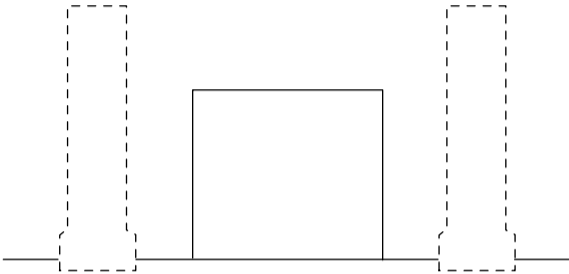
MANTEL INSTALLATION

A



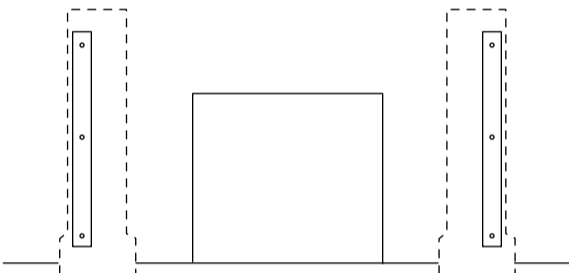
- Place the 2 mantel legs in the correct position, insuring that the distance between them is correct.
- Level may be used to make sure that they are plumb.

B



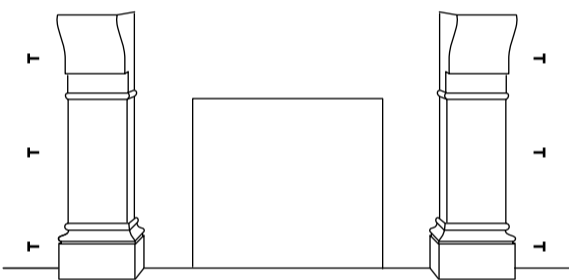
- Using a pencil, trace the outline of the 2 legs against the wall.
- Remove the 2 legs.

C



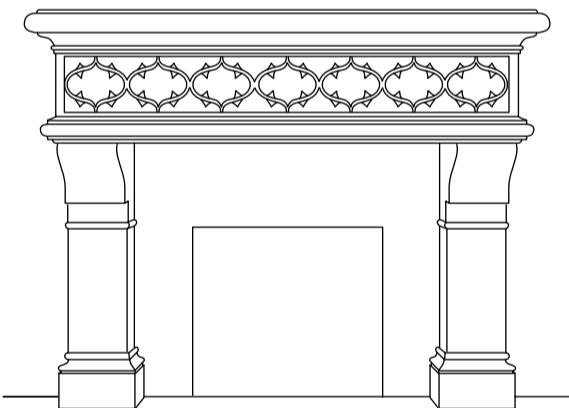
- Screw 2 2x4's to the wall. They should be placed inside the outline close to the outside edges. The 2x4's should be secure (either to wall studs or using anchors).
- Make sure that the thickness of the pre-cast pieces is taken into account: Do not place 2x4's right against the outline. Leave enough room between the 2x4's and the traced line to allow the legs to fit in place.

D



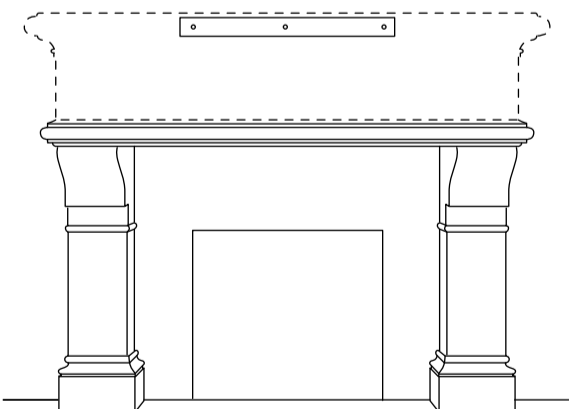
- Before placing the legs in the correct positions, drill holes for screws on the outside of each leg. These screws will fasten each leg to the 2x4.
- Put each leg into correct position and attach using the screws.
- As an added measure, construction adhesive may be used between 2x4's and the pre-cast legs.

E



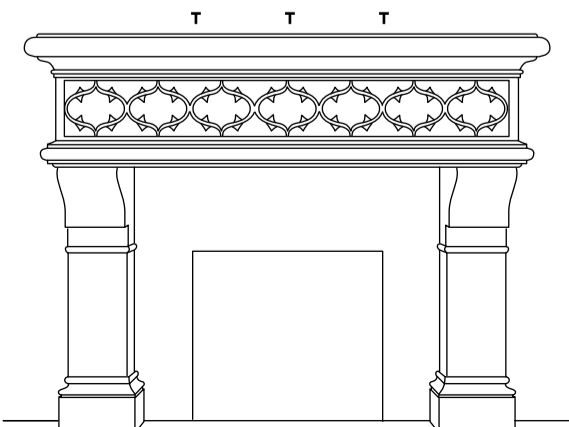
- After the legs have been fastened, place the mantel top in its correct position, and draw its outline against the wall. A level may be used to insure that the top is in the correct position.
- Remove the mantel top.

F



- Screw a 2x4 to the wall. It should be placed inside the outline close to the outside edges. The 2x4 should be secure (either to wall studs, or using anchors).
- Make sure that the thickness of the pre-cast piece is taken into account: Do not place 2x4 right against the outline. Leave enough room between 2x4 and the traced line to allow the top to fit in place.

G



- Before placing the top piece in the correct position, drill holes for screws on the top of the piece. These screws will fasten the top piece to the 2x4.
- Put the mantel top into correct position and attach using the screws.
- As an added measure, construction adhesive may be used between 2x4 and the mantel top.
- All screw-holes and gaps can now be filled with the stone coloured filler supplied.

*Please note that filler panels and hearths should be installed before the fireplace mantel.